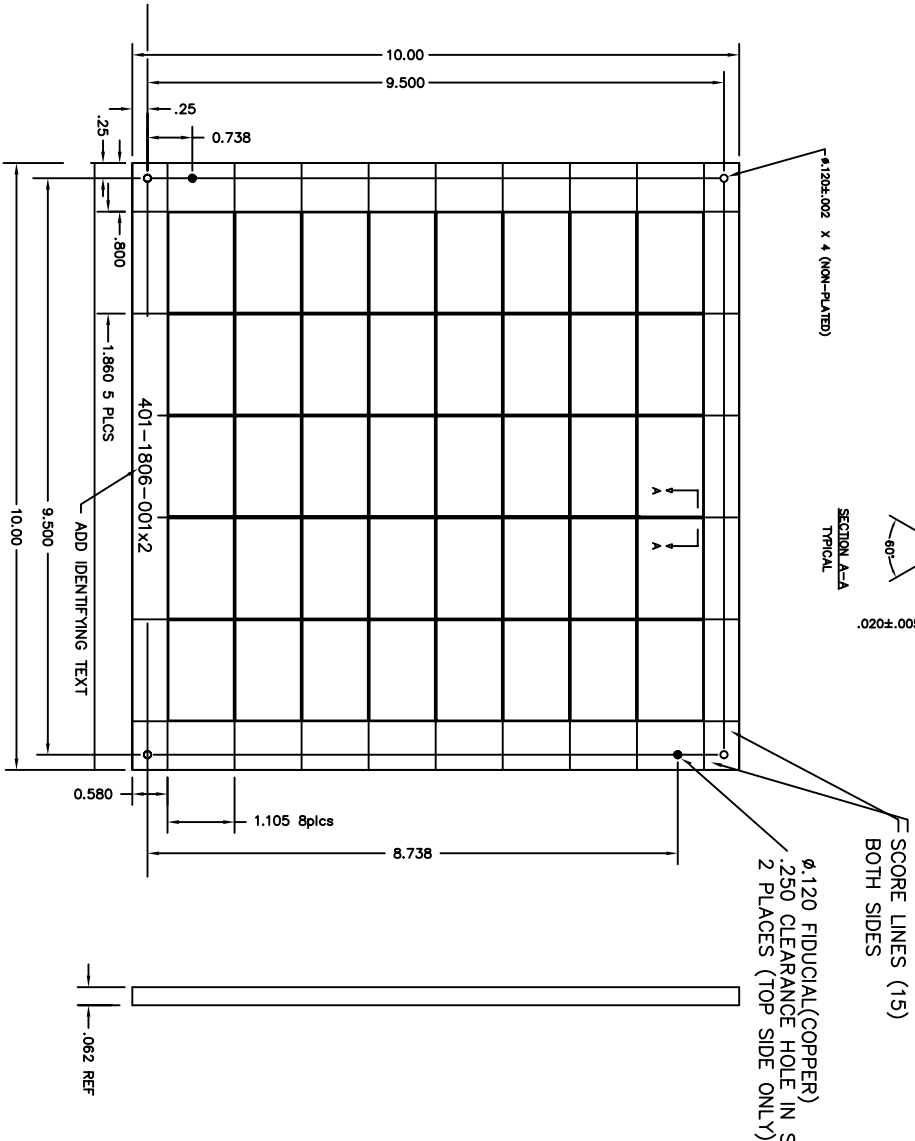
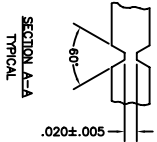


DWG REV	ECN	DESCRIPTION	AW REV	DATE
?	?	INITIAL RELEASE	X2	?



Ø.120 FIDUCIAL(COPPER)
.250 CLEARANCE HOLE IN SOLDERMASK
2 PLACES (TOP SIDE ONLY)

SCORE LINES (15)
BOTH SIDES

NOTES:

- UNLESS OTHERWISE SPECIFIED,
- CIRCUIT PATTERN CONTROLLED BY ARTWORK PACKAGE REVISION SHOWN IN REVISION BLOCK OF THIS DRAWING.
 - ALL HOLES ARE INCLUDED IN DRILL DATA, EXCEPT NPT TOOLING HOLES FOR CUSTOMER PANEL. X-Y COORDINATES IN DRILL DATA ARE BASIC.
 - FINISHED PCB WILL CONFORM TO IPC SPEC. IPC-A-600 (LATEST REVISION). THERE SHALL BE MINIMUM ISOLATION RESISTANCE BETWEEN ALL ADJACENT NON-COMMON CONDUCTORS OF 10K MEG OHMS WHEN MEASURED WITH AN APPLIED VOLTAGE OF 500VDC AT 55% RELATIVE HUMIDITY AND 25±5°C.
 - SCORE LINES EXTEND TO EDGE OF PANEL ON FRONT AND BACK.
 - PERFORMANCE CLASS TO BE PER IPC-6011 AND IPC-6012 CLASS II.
 - FINISHED PCB SHALL MEET UL FLAMMABILITY RATING OF 94 V-0. AND SURVIVE A LEAD FREE ASSEMBLY MAX REFLOW OF 260 DEGREES C, 6 PASSES.
 - LAMINATE: IPC-4101A/24/26 POLYCLAD 370HR OR EQUIVALENT.
 - VENDOR MUST BE LISTED IN THE "UL RECOGNIZED COMPONENT DIRECTORY.
 - SOLDERMASK TOP AND BOTTOM SIDES PER IPC-SM-840C, CLASS 1, AND MUST CLEAR ALL LANDS ON SOLDERMASK LAYER, TYPE LPI.
 - ALL EXTERNAL CONDUCTIVE AREAS, INCLUDING PLATED THRU HOLES, SHALL BE HASL 150-350 UNCHES THICK.
 - SILKSCREEN SHALL BE WHITE, NON CONDUCTIVE PERMANENT POLIMER INK.
 - TRACE WIDTH TOLERANCE +/- 10%.
 - WARP AND TWIST REQUIREMENTS: PER IPC-6012.
 - ALL BARE BOARDS SHALL HAVE A FULL ELECTRICAL TEST PER: IPC-D-356.
 - ALL FILES ARE ELECTRONICALLY CONTROLLED AS 401-1806-001x2
 - PCB IS 1.075" X 1.650".
 - HOLE DIAMETERS ARE FINISHED SIZES.
 - THIS IS A TWO LAYER BOARD.

MATERIAL/FINISH: FR4 BOARD FINISHED THICKNESS SHALL BE 0.062 +/-0.010 BASE CU FOIL : EXTERNAL. 1 OZ : INTERNAL. 1 OZ. (SEE SHEET 2). BOARD SHALL BE LEAD FREE - RoHS COMPLIANT.		UNLESS OTHERWISE SPECIFIED DIMENSIONS ARE IN INCHES(mm) DRAWING PREPARED IN ACCORDANCE WITH MIL-STD-100 LINEAR GENERAL TOLERANCING AS FOLLOWS: .XX = ±.01 .XXX = ±.005 .XXXX = ±.0010 ANGULAR = ±0°30' GENERAL MACHINED SURFACE FINISH 63/	
DRAWN P. Evans	DATE 20nov09	ALL INFORMATION DISCLOSED BY THIS DOCUMENT IS CONFIDENTIAL AND PROPRIETARY TO RF MONOLITHICS, INC. ALL DESIGN, MANUFACTURE, USE, REPRODUCTION AND SALES RIGHTS ARE RESERVED BY RF MONOLITHICS, INC.	
TITLE PCB, REF DESIGN BRD, TRC103-915/950		RFMonolithics, Inc. DALLAS , TEXAS 75244 USA	
SIZE B	FSCM NO. 2U874	DWG. NO. 401-1806-001	REV pr01/8